



## MAC CİHAZLARDA BAĞLANTI

1. MAC cihazlarda eduroam'a bağlanmak için tarayıcınızdan aşağıdaki linki açınız.

<https://cat.eduroam.org/>

2. Açılan sayfada kutucukta işaretli olan "Click here to download your eduroam® installer" a tıklayınız.

CAT was recently upgraded to version 2.1.0. Please report any issues to the mailing list [cat-users@lists.geant.org](mailto:cat-users@lists.geant.org)

**eduroam**  
Configuration Assistant Tool

Start page About Language Help Manage Terms of use

eduroam® installation made easy:  
**Chrome OS**  
Custom built for your organisation

Google Chrome OS  
chrome://net-internals/ - x  
chrome://net-internals/: eduroam

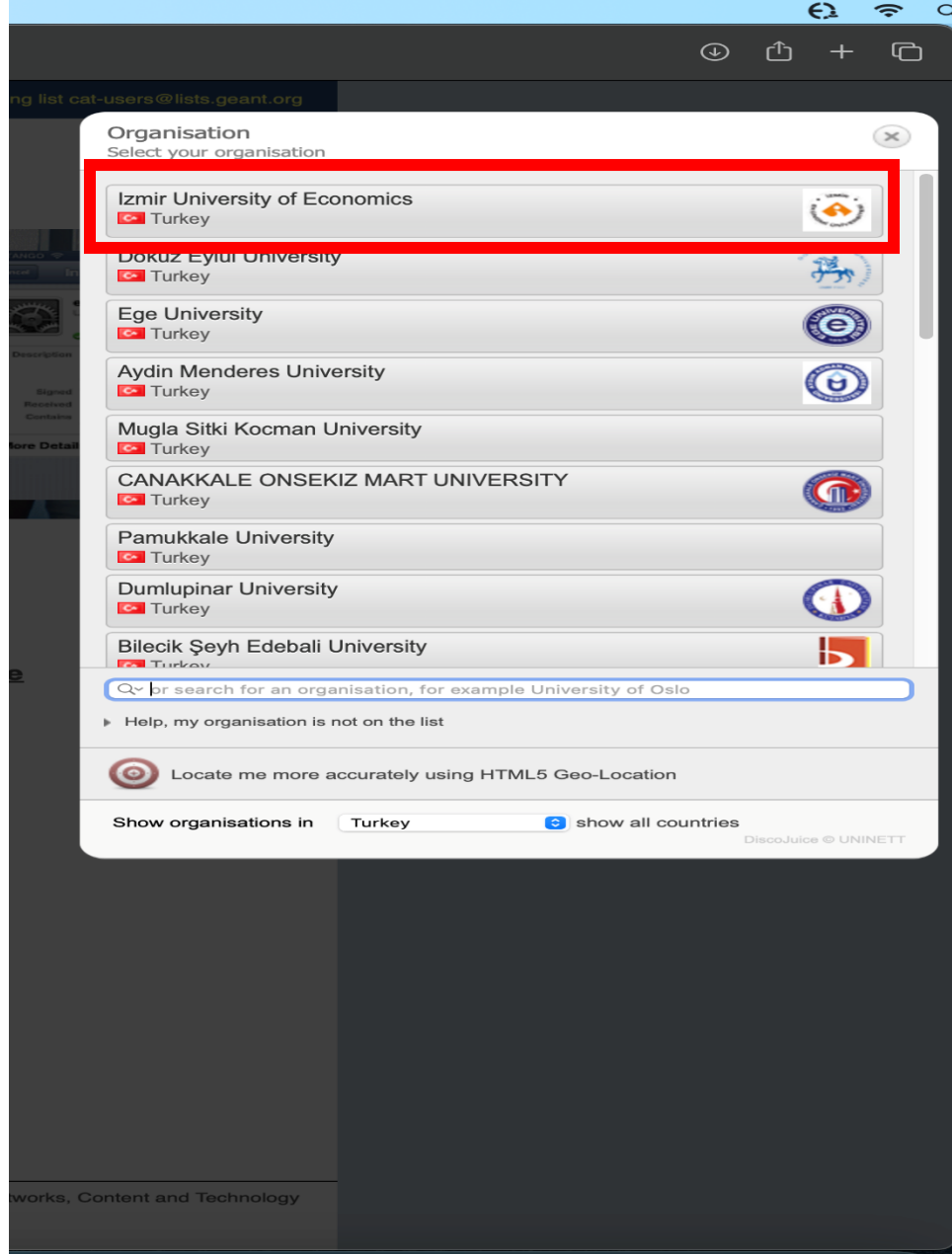
Welcome to eduroam CAT  
**Connect your device to eduroam®**  
eduroam® provides access to thousands of Wi-Fi hotspots around the world, free of charge. [Learn more](#)

**Click here to download your eduroam® installer**

eduroam CAT - Release [CAT-2.1](#) © 2011-2020 GÉANT Association  
on behalf of the GÉANT Projects funded by EU; and others [Full Copyright and Licenses](#)

[eduroam® Privacy Notice](#) European Commission Communications Networks, Content and Technology

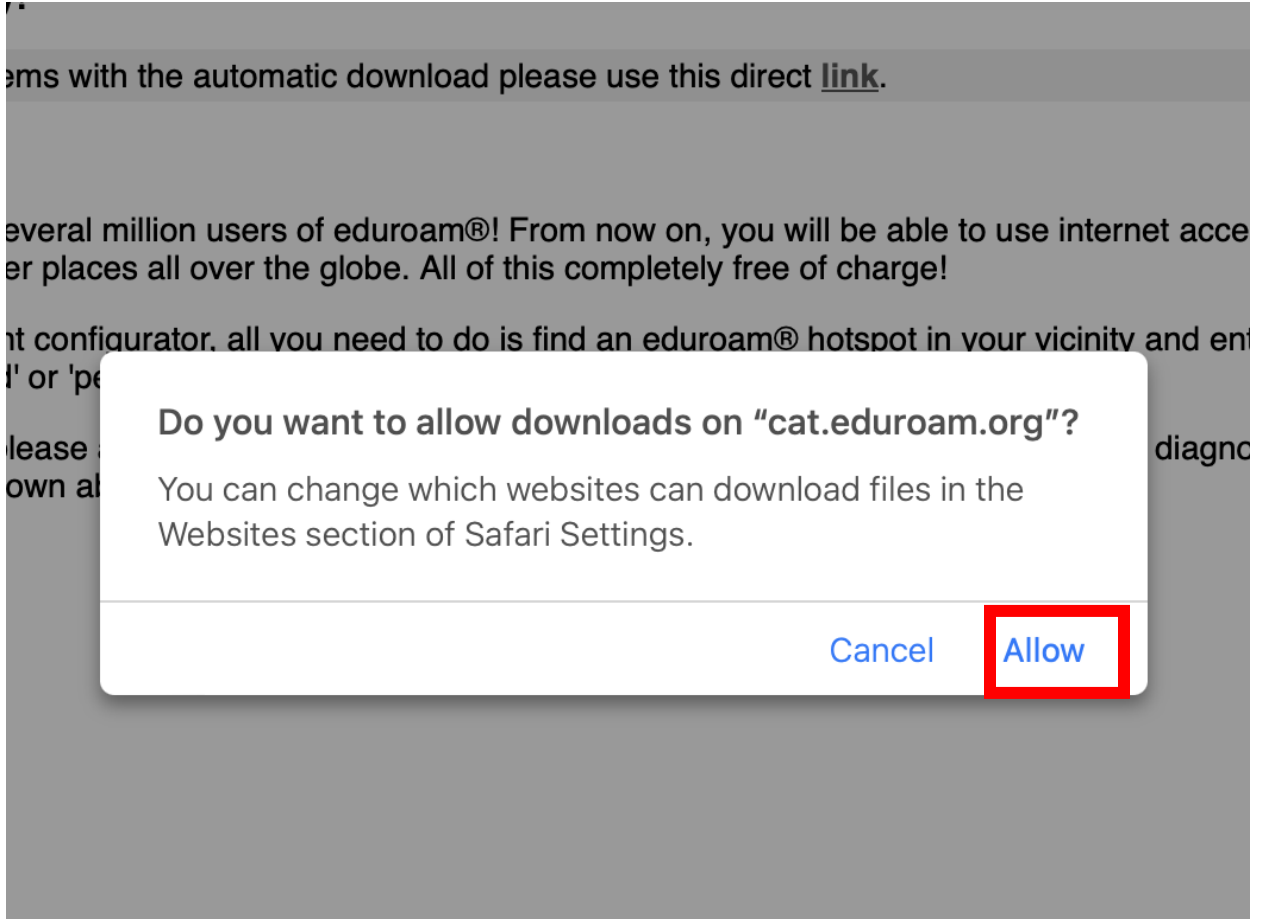
3. Sağda açılan pencerede “Izmir University of Economics” seçip devam ediniz.



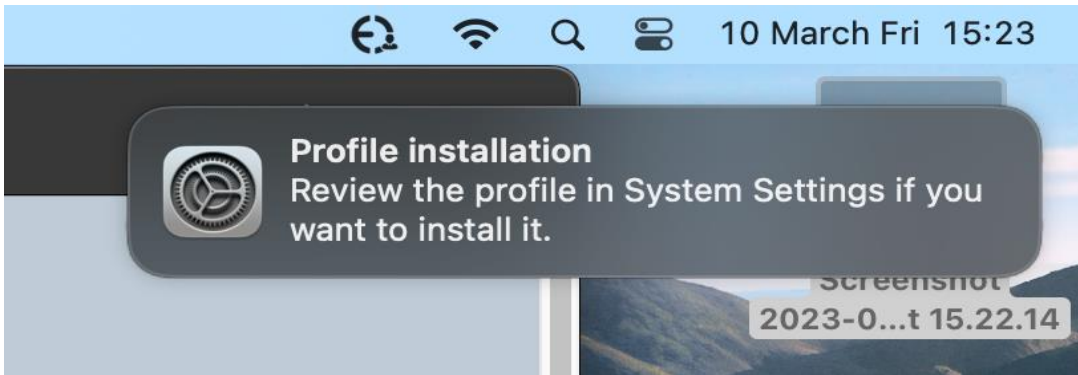
4. Açılan sayfada “eduroam” a basınız.

The screenshot shows the eduroam Configuration Assistant Tool website. The browser address bar displays "cat.eduroam.org". A notification at the top states: "CAT was recently upgraded to version 2.1.0. Please report any issues to the mailing list cat-users@lists.geant.org". The website header includes the eduroam logo and navigation links: "Start page", "About", "Language", "Help", "Manage", and "Terms of use". Below the header, the text "Izmir University of Economics" is displayed, with a "select another" link. A message reads: "If you encounter problems, then you can obtain direct assistance from your organisation at: WWW: <https://eduroam.ieu.edu.tr>". There are two logos on the right: "İZMİR EKONOMİ ÜNİVERSİTESİ" and "TÜBİTAK ULAKBİM". The main content area features an Apple logo and the text "Download your installer for Apple device". Below this, there is a blue button labeled "eduroam" with an Apple logo icon to its right. A red rectangle highlights the "eduroam" button. Below the button, it says "Choose another installer to download". The footer contains copyright information: "eduroam CAT - Release CAT-2.1 © 2011-2020 GÉANT Association on behalf of the GÉANT Projects funded by EU; and others Full Copyright and Licenses". It also includes links for "eduroam@ Privacy Notice" and logos for "GÉANT" and the "European Commission Communications Networks, Content and Technology".

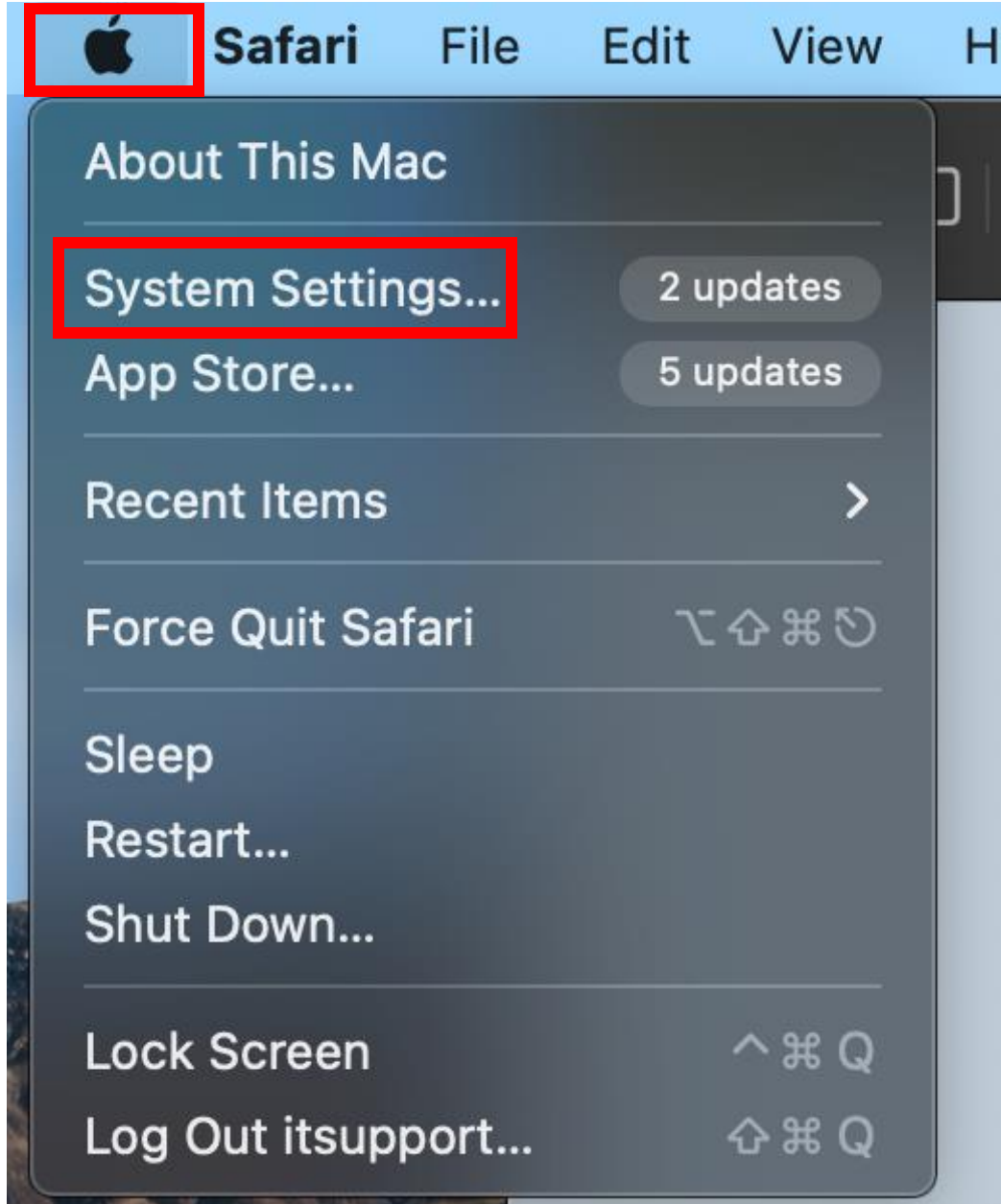
5. eduroam'a bastıktan sonra açılan pencereden "Allow" a basınız.



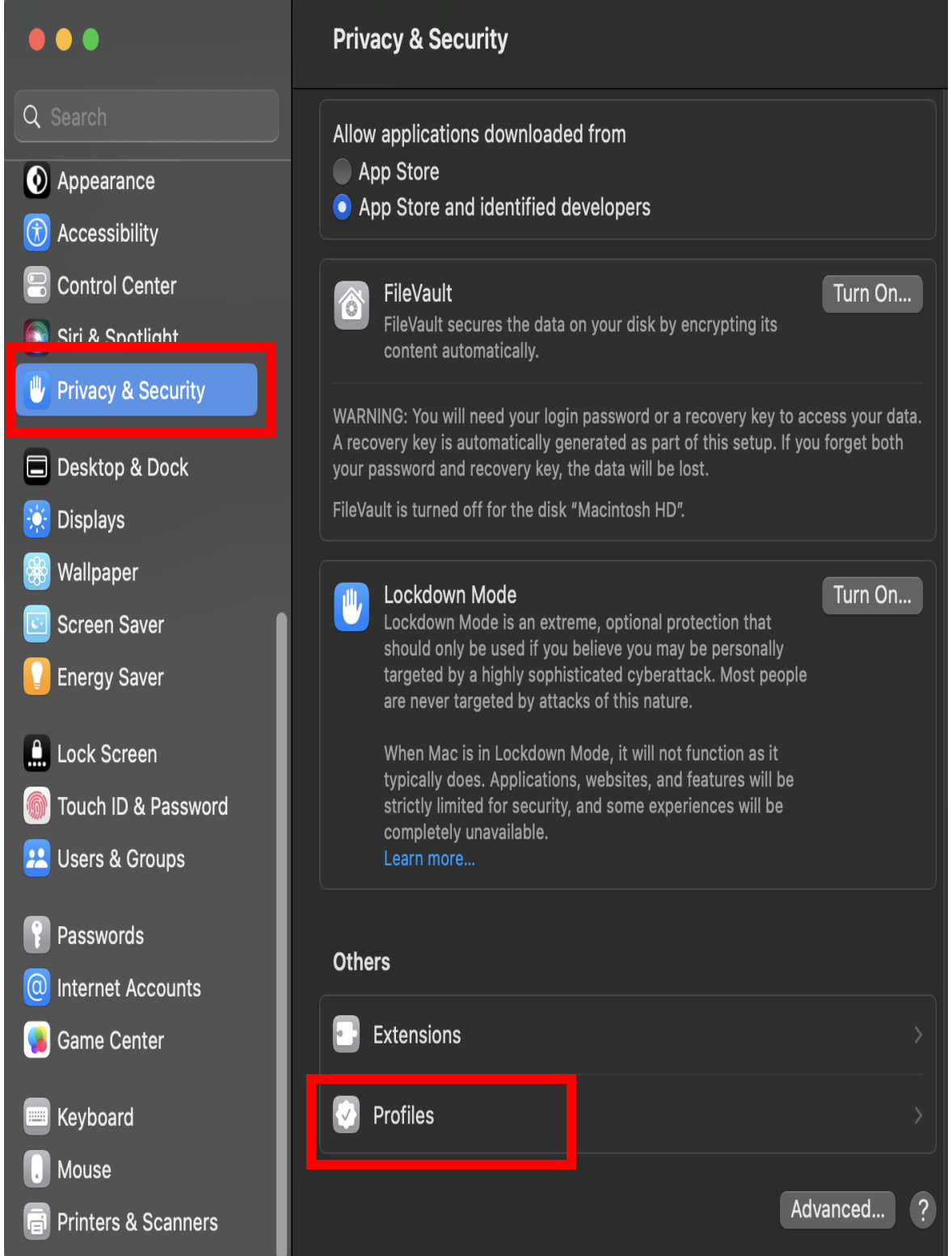
6. Allow dedikten sonra sağ üstte profilin indirildiği bildirimini çıkacaktır.



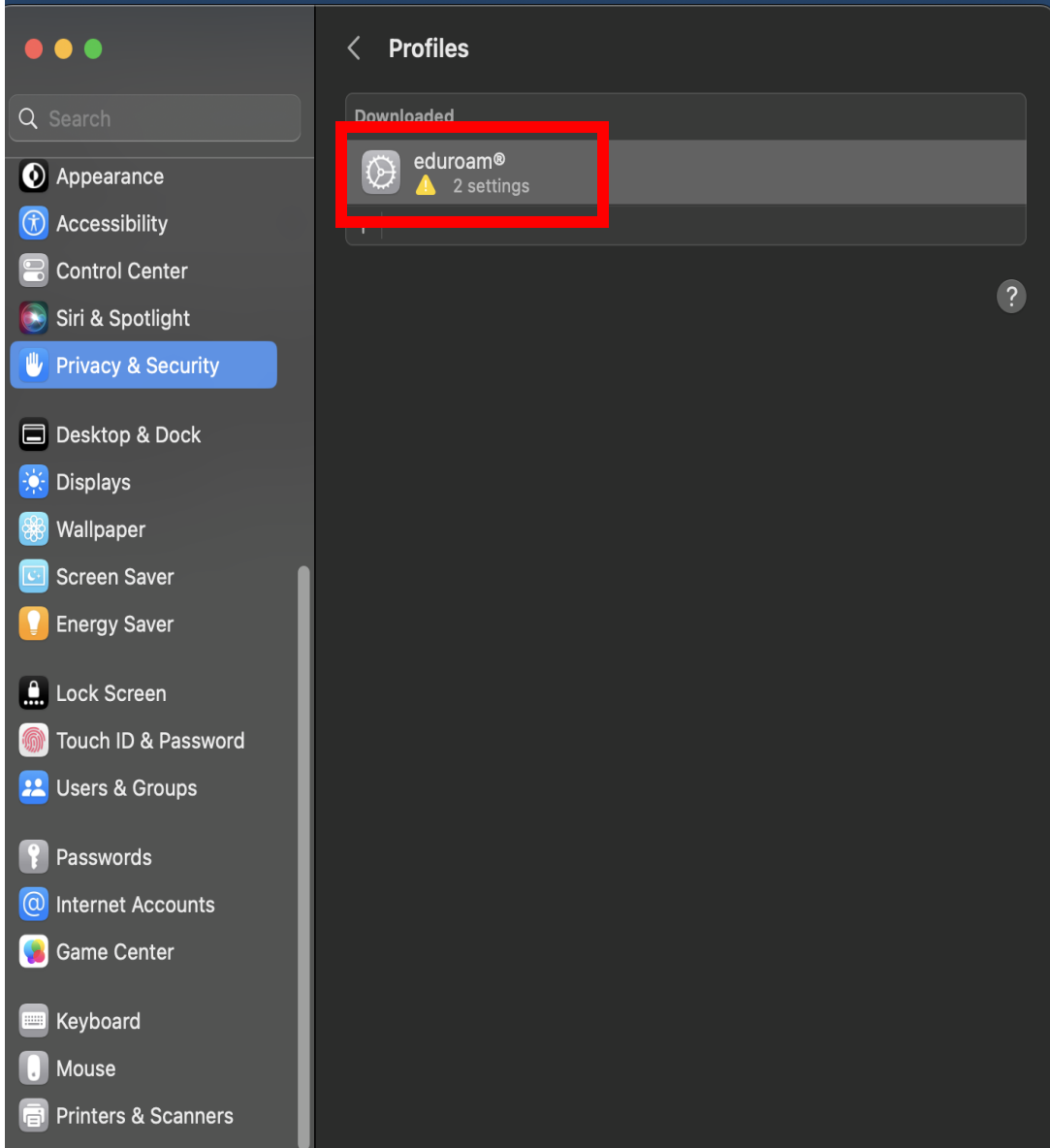
7. Sol köşede bulunan “Apple Simgesine” basınız. Ardından açılan seçeneklerden “System Settings” e basınız.



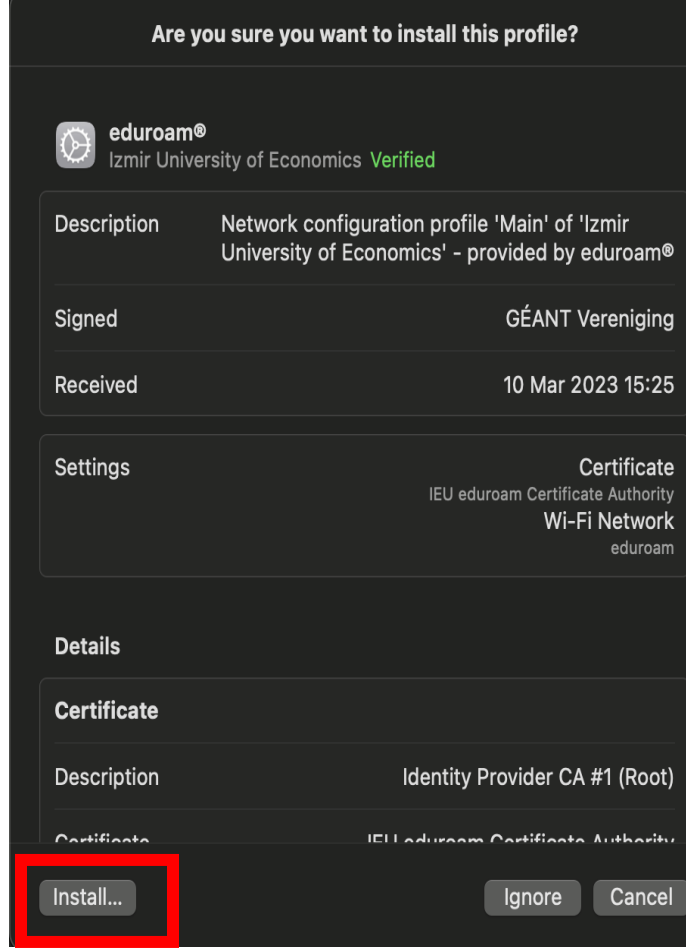
8. Açılan ekrandan solda bulunan **“Privacy&Security”** e tıklayıp, sağda bulunan **“Profiles”** e basınız.



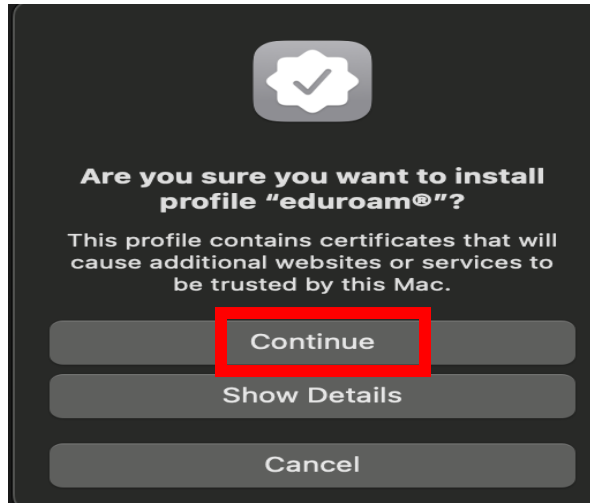
9. Profilin kurulumu için “eduroam” a basınız.



10. "Install" a basınız.



11. Profil kurulumu onayı için "Continue" ye basınız.





12. **Username** kısmına Akademik/ İdari personelseniz okul mail adresinizi “ [isim.soyisim@ieu.edu.tr](mailto:isim.soyisim@ieu.edu.tr)” şeklinde Öğrenciyse “ [isim.soyisim@std.ieu.edu.tr](mailto:isim.soyisim@std.ieu.edu.tr)” şeklinde yazınız.  
**Password** kısmına ise mail adresinize giriş yaptığınız şifrenizi giriniz. Ardından “Install” a basınız.

**Enter settings for “eduroam®”:**

Enter settings for the enterprise network “eduroam”:

Username:

Password:

13. “Install” a basınız.

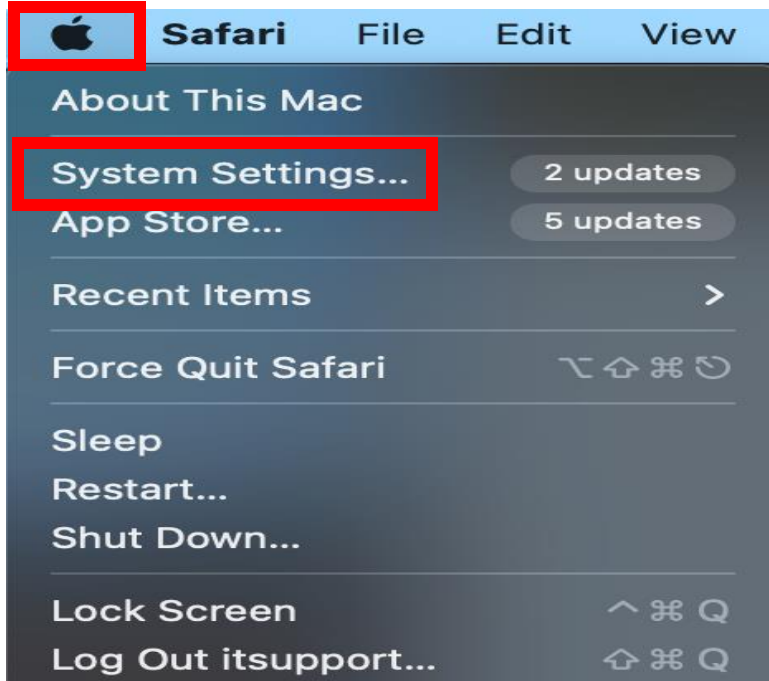
**Profile “eduroam®”**

Important Notice: your username MUST contain an '@' and end with ...ieu.edu.tr !

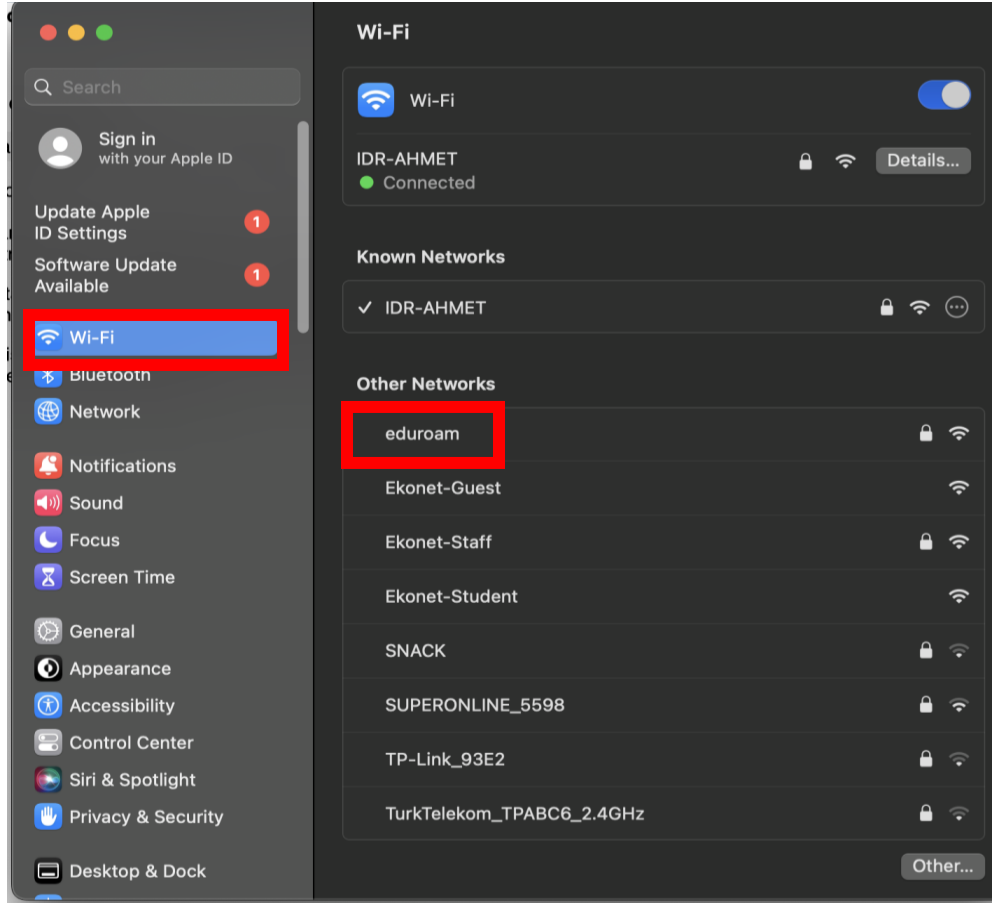
14. Cihazın kendi şifresini girip ardından "OK" a bastığımızda profil yüklenmiş olacaktır.



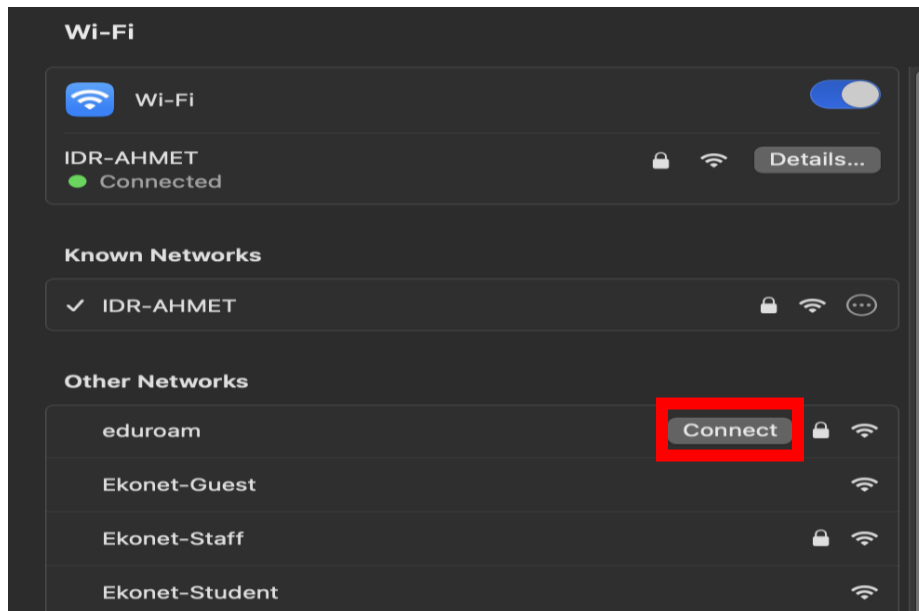
15. Daha sonra tekrardan Sol köşede bulunan "Apple Simgesine" basınız. Ardından açılan seçeneklerden "System Settings" e basınız.



16. Solda bulunan “Wi-Fi” ye basıp açılan ağlardan “eduroam” olana basınız.

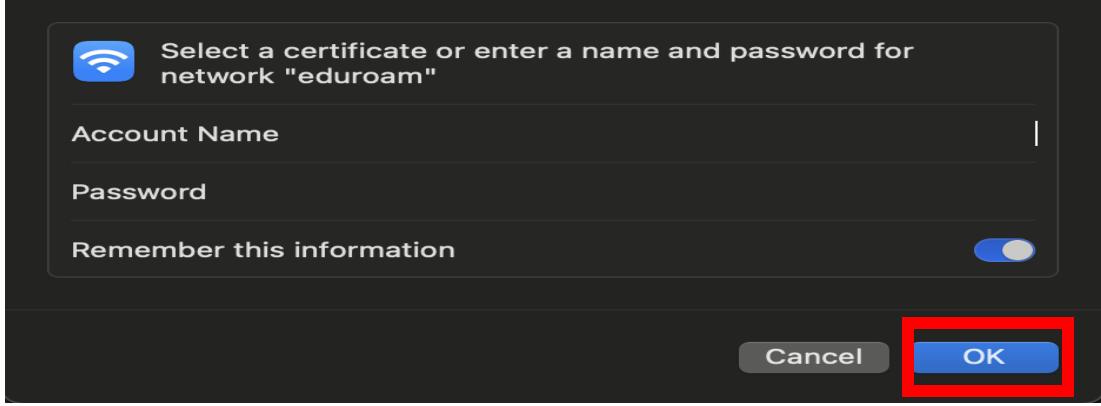


17. “eduroam” in sağında bulunan “Connect” e basınız.



18. **Account Name** kısmına Akademik/ İdari personelseniz okul mail adresinizi "[isim.soyisim@ieu.edu.tr](mailto:isim.soyisim@ieu.edu.tr)" şeklinde , Öğrenciyseniz "[isim.soyisim@std.ieu.edu.tr](mailto:isim.soyisim@std.ieu.edu.tr)" şeklinde yazınız.

**Password** kısmına ise mail adresinize giriş yaptığınız şifrenizi giriniz. Ardından "**OK**"a basınız.



19. Ok dedikten sonra eduroam'a bağlanmış bulunmaktayız.

